

# Built to Last – Enhancing Quality across the value chain for Solar Rooftop projects



India Germany Roundtable on Solar rooftops, New Delhi,  
18<sup>th</sup> Feb 2016

## Why ?



## Build to Last



# Build to Last

- Solar Modules
- Inverters
- Structure
- Interconnecting cables
- Evacuation devices



- Site Assessment
- Design & Engineering
- Construction
- Safety procedures & processes
- Experienced contractor

Components

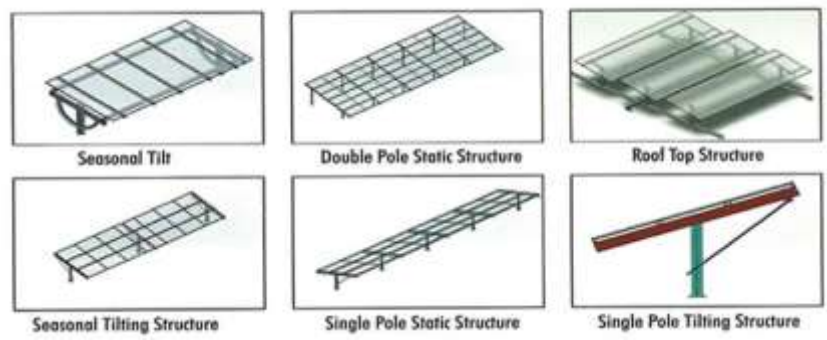
Services

# Component Selection



- All are IEC approved
- History
- Financial rating
- Support

- Central / String
- Track Record
- Safety
- Service support



- Suitable for type of roof
- Long life
- Strength

- High Quality
- Local Standard

- Evacuation Philosophy
- Net Metering / Reverse Power protection



# Services



- Orientation
- Inclination
- Shadow analysis
- Roof

Characteristics

- Roof stability / Life
- Puncturing / Clamping
- Water Blockages
- Serviceability

Building codes



- Knowledge
- Experience
- Trained manpower



- During and after construction
- Grating / Walkways
- Safety Life lines



Operations and  
Maintenance

# Enerparc AG



**Incorporated in 2008**



**Strong EPC Team**



**Development in USA**

**IPP (950MW)**



**EPC (1400MW)**



**O&M(1050MW)**



# References in India



**T3 Delhi Airport | 2.14**



**RAXA Academy | 0.10**



**AUMA India | 0.15**

**ATMA Power | 2.10**



**AUMA Expansion | 0.22**



**Hyderabad Airport | 5.00**



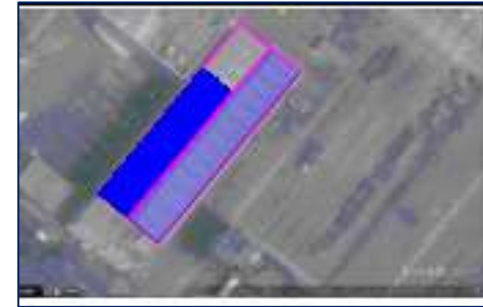
# References in India



**T3 Expansion | 5.7**



**GTI | 0.233**



**APM Terminals | 0.18**

**PKP Components | 0.70**



**GMRIT Rajam | 1.0**




**Mactan Airport | 1.64**





# Summary

- **Proper site assessment**
  - **Able design & Engineering**
  - **Selection of components important**
  - **Quality of Installation / Manpower critical**
  - **Safety**
  - **Regular Operation and Maintenance**
- 

**Thanks for your attention**



# Schematic

